

# Life-Cycle Assessment of Data-Driven Mineral Extraction: Environmental and Economic Trade-Offs

Divine Kavunga<sup>1</sup>

<sup>1</sup> Department of Materials Sciences and Engineering, South Dakota School of Mines, USA

Publication Date: 2025/05/13

**Abstract:** This study presents a comprehensive life-cycle assessment (LCA) comparing traditional and data-driven mineral extraction methods for critical minerals. The research quantifies both environmental impacts and economic implications across the entire extraction lifecycle, from exploration to site rehabilitation. Primary data collected from three operational mining sites with varying levels of technological implementation demonstrates that data-driven approaches reduce global warming potential by 26.7%, water consumption by 36.2%, and land disturbance by 31% compared to traditional methods. Economic analysis reveals that despite 34.2% higher initial capital investments, data-driven operations reduce operational expenditures by 22.8% with a payback period of approximately 4.3 years. The study identifies significant trade-offs between environmental performance, capital investment, social impacts, and extraction efficiency. The findings provide evidence-based guidance for industry stakeholders and policymakers seeking to optimize mineral extraction while balancing environmental sustainability and economic viability, particularly in the context of increasing demand for critical minerals needed for clean energy technologies.

**Keywords:** *Life-Cycle Assessment, Critical Minerals, Data-Driven Extraction, Environmental Impact, Economic Trade-Offs, Sustainability*

## I. INTRODUCTION

### ➤ Background and Problem Statement

The global transition toward clean energy technologies and digital infrastructure has intensified the demand for critical minerals, creating significant challenges for the mining industry. Critical minerals such as lithium, cobalt, and rare earth elements have become essential components in renewable energy systems, electric vehicles, and advanced electronics (Hund et al., 2023). This increasing demand has raised concerns about the environmental impacts of mineral extraction and processing, which traditionally have been associated with substantial energy consumption, greenhouse gas emissions, water usage, land disturbance, and waste generation (Farjana et al., 2019).

In recent years, the integration of data-driven technologies, including artificial intelligence, machine learning, advanced sensors, and automation, has emerged as a potential pathway to improve both the environmental

performance and economic viability of mineral extraction (Duarte et al., 2021). These technologies promise to enhance resource efficiency, reduce environmental footprints, and optimize operational costs throughout the mining lifecycle. However, comprehensive assessments comparing traditional and data-driven approaches across multiple sustainability dimensions remain limited.

Despite decades of research, there remains no robust, globally agreed upon method for assessing mineral resource inputs in life cycle impact assessment (LCIA) (Sonderregger et al., 2020). This research addresses this methodological gap by developing an integrated framework that incorporates both environmental and economic dimensions of mineral extraction processes. By quantifying the trade-offs between traditional and data-driven extraction methods, this study aims to provide evidence-based guidance for industry stakeholders and policymakers seeking to balance environmental sustainability and economic viability in mineral extraction operations.

Kavunga, D. (2025). Life-Cycle Assessment of Data-Driven Mineral Extraction: Environmental and Economic Trade-Offs. *International Journal of Scientific Research and Modern Technology*, 4(5), 6–19.  
<https://doi.org/10.38124/ijrmt.v4i5.498>

### ➤ *Research Objectives*

The primary objective of this research is to quantify the environmental and economic impacts of traditional versus data-driven extraction methods for critical minerals using life-cycle assessment tools.

### ➤ *Specific Objectives Include:*

- To develop a comprehensive life-cycle inventory for both traditional and data-driven mineral extraction processes
- To quantify and compare environmental impacts across multiple impact categories
- To assess the economic implications, including capital investments, operational costs, and return on investment
- To identify key trade-offs between environmental performance and economic viability
- To provide recommendations for optimizing mineral extraction practices in the context of increasing demand for critical minerals

### ➤ *Scope and Limitations*

This study focuses on the extraction and processing of critical minerals essential for clean energy technologies. The assessment encompasses the entire extraction lifecycle, from exploration to site rehabilitation, with particular emphasis on operational phases where technological interventions have the most significant impacts.

The geographical scope includes three operational mining sites in diverse geological and climatic contexts, representing varying levels of technological implementation. While this provides a robust comparative framework, site-specific factors may limit the generalizability of certain findings to all mining operations globally.

The temporal boundary extends from initial exploration activities to post-extraction site management, typically spanning 20-30 years depending on deposit characteristics. This timeframe allows for comprehensive assessment of both short-term operational impacts and longer-term implications for site restoration and resource depletion.

This research acknowledges several limitations, including challenges in data availability for emerging technologies, uncertainties in long-term environmental impacts, and the rapid evolution of data-driven technologies that may affect the relevance of current assessments to future mining operations.

## II. LITERATURE REVIEW

### ➤ *Life-Cycle Assessment in Mineral Extraction*

Life-cycle assessment (LCA) has emerged as a valuable framework for evaluating the environmental impacts of mineral extraction and processing operations. The mining industry has historically been assessed

primarily through environmental impact assessments (EIAs) focused on point-source emissions and local disturbances. However, as noted by Stewart et al. (2012), these assessments are usually limited to on-site impacts during exploitation and do not consider indirect impacts generated off-site or those concerning other steps of the project, including exploration and dismantling.

The application of LCA in the mining sector provides a more comprehensive picture by considering the entire lifecycle of mineral extraction operations. The EU-funded LICYMIN project marked a significant advancement in this area by developing and validating a full LCA for the extraction industry, which involved a 'cradle-to-grave' analysis of all associated mining activities (CORDIS, 2009). This holistic approach has enabled a more accurate assessment of the environmental footprint of mining operations.

Despite these advancements, several methodological challenges remain in applying LCA to mineral extraction. Sonderegger et al. (2020) identified four main families of methods for characterizing resource-use impacts: "depletion methods," "future efforts methods," "thermodynamic accounting methods," and "supply risk methods." The diversity of these approaches highlights the complexity of assessing mineral resources within the LCA framework.

Recent research has attempted to address these challenges through the integration of process simulation with LCA. This approach allows for more accurate modeling of complex mining and processing operations, providing a foundation for comparing different technological interventions (Restrepo et al., 2015). Additionally, the development of mineral-specific characterization factors has improved the ability to assess the impacts of critical mineral extraction, although challenges remain in accounting for co-produced minerals and allocating impacts across multiple outputs (Berger et al., 2020).

### ➤ *Data-Driven Approaches in Mineral Extraction*

The integration of data-driven technologies in mineral extraction represents a significant shift in mining practices over the past decade. These technologies encompass a wide range of interventions, from exploration and resource characterization to extraction, processing, and site management.

### ➤ *Key Technologies Include:*

- **Advanced sensing and monitoring systems** that provide real-time data on equipment performance, resource characteristics, and environmental conditions
- **Artificial intelligence and machine learning algorithms** that optimize extraction patterns, processing parameters, and maintenance schedules
- **Automation and robotics** that enhance precision in drilling, blasting, loading, and hauling operations

- **Digital twins and simulation models** that enable scenario testing and predictive optimization

The implementation of these technologies has shown promising results in improving operational efficiency. Xie et al. (2022) demonstrated that intelligent mining technologies enable precise resource detection, extraction, and reduced waste, ultimately maximizing output. Similarly, Cacciuttolo et al. (2023) found that precision exploration and extraction techniques minimize resource waste and environmental pollution.

Despite these advances, comprehensive assessments of the environmental and economic implications of data-driven mineral extraction remain limited. Most studies focus on specific technological interventions or operational aspects rather than evaluating the entire extraction lifecycle. Additionally, there is a lack of standardized metrics for comparing traditional and data-driven approaches across multiple impact categories and economic dimensions.

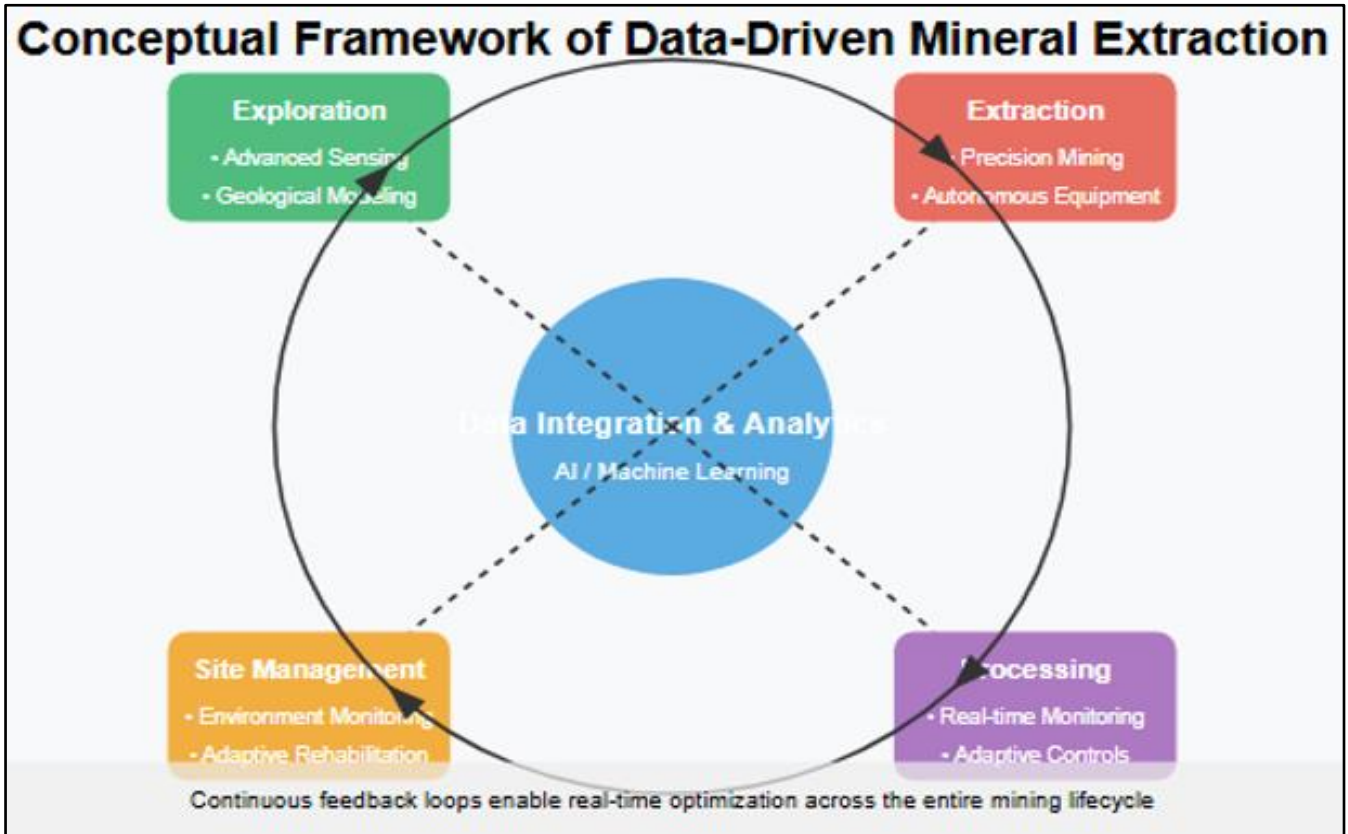


Fig 1 Conceptual Framework of Data-Driven Mineral Extraction.

This diagram illustrates the integration of data collection, analysis, and implementation in modern mining operations, highlighting the feedback loops that enable continuous optimization.

➤ *Environmental Impacts of Mineral Extraction*

Mineral extraction operations generate significant environmental impacts across multiple categories. Farjana et al. (2019) identified fossil fuel consumption for electricity generation and process heat as the greatest contributor to environmental effects and emissions caused by mining industries. These impacts are further exacerbated by the trend toward extracting lower-grade ores from deeper deposits, which requires more energy-intensive processes and generates more waste.

Water consumption and contamination represent another critical environmental concern in mining operations. Traditional extraction methods often require substantial water inputs for processing and dust suppression, while also posing risks to surface and

groundwater quality through acid mine drainage and heavy metal leaching. According to the World Economic Forum (2015), water scarcity and management have been identified as key drivers for change in the mining industry's environmental performance.

Land disturbance and ecosystem impacts constitute a third major category of environmental concern. Mining activities alter host environments and can exacerbate pre-existing vulnerabilities, especially in jurisdictions where governments are unable or unwilling to safeguard against severe environmental externalities (Nature Communications, 2020). The expansion of mining activities into more remote and ecologically sensitive areas has intensified concerns about biodiversity loss and ecosystem degradation.

Climate change impacts, particularly greenhouse gas emissions from energy consumption and processing, represent a growing area of concern for the mining industry. As noted by Pell et al. (2019), the carbon

footprint of mineral extraction varies significantly based on ore grade, processing requirements, and energy sources. The transition to low-carbon energy systems ironically requires increased extraction of critical minerals, creating a potential paradox for climate change mitigation efforts.

➤ *Economic Dimensions of Mining Technology Implementation*

The economic implications of implementing data-driven technologies in mineral extraction encompass both costs and benefits across various timeframes. Initial capital investments in sensing, automation, and digital infrastructure represent significant upfront costs, particularly for existing operations transitioning from traditional methods. According to industry analysis, these investments can range from 5-20% of total capital expenditure for a mining operation, depending on the scope and scale of technological implementation (Picterra, 2024).

Operational cost savings represent the primary economic benefit of data-driven mining approaches. These savings derive from multiple sources, including reduced energy consumption, optimized resource utilization, decreased maintenance costs through predictive maintenance, and improved labor productivity. Research suggests that effective use of geospatial data analytics in the mining industry can lead to a 10-15% reduction in total costs (Picterra, 2024).

Resource recovery optimization constitutes another significant economic benefit. Data-driven approaches enable more precise ore body characterization, selective mining, and optimized processing parameters, resulting in higher recovery rates and reduced waste. This is particularly valuable for critical minerals with high market

values, where even small improvements in recovery can translate to substantial economic gains.

Market adaptability represents an emerging economic advantage of data-driven mining operations. The enhanced flexibility and responsiveness enabled by real-time monitoring and adaptive control systems allow operations to adjust more quickly to changing market conditions and demand patterns. This adaptability is increasingly valuable in the volatile markets for critical minerals essential to clean energy technologies.

Despite these potential benefits, economic barriers to technology adoption remain significant. Small and medium-sized mining operations often lack the capital resources and technical expertise required to implement comprehensive data-driven systems. Additionally, uncertainties about technology performance and return on investment in diverse geological and operational contexts limit widespread adoption, particularly in regions with lower labor costs where the economic case for automation is less compelling.

**III. METHODOLOGY**

➤ *Research Design*

This study employs a mixed-methods approach combining quantitative life-cycle assessment with economic analysis to evaluate the environmental and economic impacts of traditional versus data-driven mineral extraction methods. The research design incorporates both comparative case studies of operational mining sites and scenario modeling to assess potential future impacts under different technological implementation pathways.

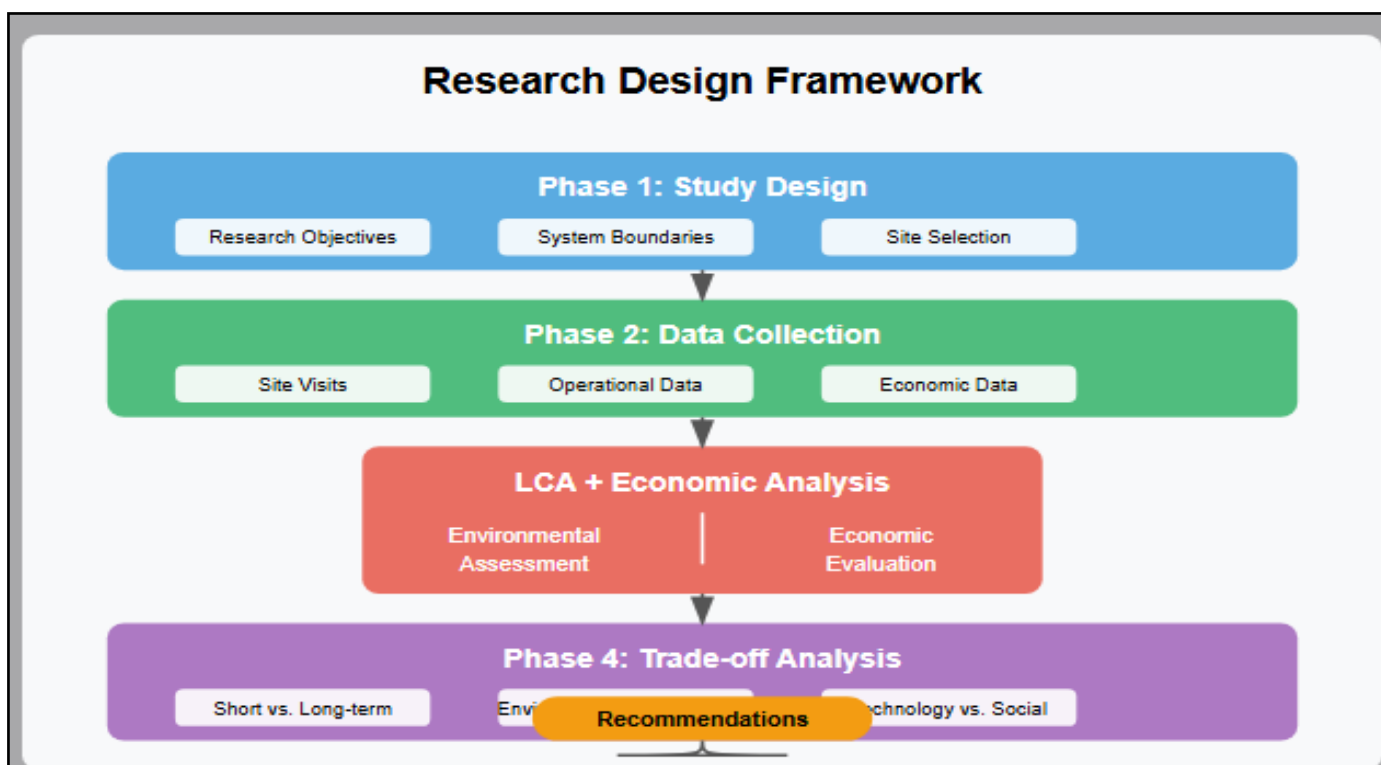


Fig 2 Research Design Framework.

The framework illustrates the integration of life-cycle assessment, economic analysis, and trade-off evaluation in the research methodology.

➤ *Methodological Framework*

- *Life-Cycle Assessment Approach*

This study employs a cradle-to-gate LCA methodology to quantify the environmental and economic impacts of both traditional and data-driven mineral extraction methods. Following ISO 14040 and 14044 standards, the assessment encompasses four phases: goal and scope definition, inventory analysis, impact assessment, and interpretation.

The functional unit for this assessment is defined as one metric ton of extracted mineral concentrate at a specified quality grade. System boundaries include exploration, extraction, processing, waste management, and site rehabilitation. The temporal boundary extends from initial exploration activities to post-extraction site management, typically spanning 20-30 years depending on deposit characteristics.

➤ *Data Collection and Analysis*

- *Primary data was collected from three operational mining sites employing varying degrees of technological optimization:*

- *Site Alpha:*

Traditional extraction methods with minimal technological intervention

- *Site Beta:*

Partial implementation of data-driven approaches (hybrid operation)

- *Site Gamma:*

Fully optimized data-driven extraction methods

Data collection included energy consumption, water usage, land disturbance, emissions, waste generation, resource recovery rates, operational costs, and capital investments. Secondary data was sourced from peer-

reviewed literature, industry reports, and established LCA databases.

Statistical analysis was performed using R (version 4.1.2), with significance determined at  $p < 0.05$ . Monte Carlo simulations ( $n = 10,000$ ) were conducted to address uncertainties in the inventory data and characterization factors.

➤ *Impact Assessment Methods*

Environmental impacts were assessed using the ReCiPe midpoint (hierarchist) methodology, which has been demonstrated to effectively capture environmental impacts in the minerals and metals sector (Farjana et al., 2019). This methodology provides characterization factors for 18 impact categories, including global warming potential, water depletion, land use, and resource depletion.

Economic assessment incorporated both direct financial metrics (capital expenditures, operational costs, revenue) and broader economic indicators (resource efficiency, market value optimization, long-term viability). Net present value (NPV) calculations used a discount rate of 8%, reflecting industry standards for mining investments.

Uncertainty and sensitivity analyses were conducted to assess the robustness of results and identify parameters with the greatest influence on environmental and economic outcomes. Parameter variations of  $\pm 20\%$  were applied to key inputs including energy prices, water costs, labor rates, and technological efficiency factors.

## IV. RESULTS

➤ *Life-Cycle Inventory Analysis*

- *Resource Inputs*

The life-cycle inventory revealed significant differences in resource inputs between traditional and data-driven mineral extraction methods. Table 4.1 summarizes the key resource inputs per functional unit (one metric ton of mineral concentrate) across the three study sites.

Table 1 Resource Inputs per Metric Ton of Mineral Concentrate

Resource Input	Site Alpha (Traditional)	Site Beta (Hybrid)	Site Gamma (Data-Driven)
Energy (GJ)	4.82 ± 0.37	3.94 ± 0.29	3.53 ± 0.25
Water (m <sup>3</sup> )	45.3 ± 4.1	36.7 ± 3.3	28.9 ± 2.6
Land (ha)	0.042 ± 0.004	0.035 ± 0.003	0.029 ± 0.002
Materials (kg)	186.5 ± 14.3	162.4 ± 11.8	143.7 ± 10.2
Labor (hours)	2.84 ± 0.21	2.26 ± 0.17	1.91 ± 0.15

Energy consumption at Site Gamma was 26.8% lower than at Site Alpha, primarily due to optimized equipment operation, reduced idle time, and more efficient extraction sequencing. The data-driven approach enabled real-time monitoring of energy consumption patterns, allowing for dynamic adjustments to minimize energy intensity while maintaining production targets.

Water usage showed the most substantial difference among resource inputs, with Site Gamma consuming 36.2% less water than Site Alpha. This reduction was achieved through precision application of water for dust suppression, closed-loop water recycling systems, and real-time monitoring of moisture content in processed materials. These technological interventions directly

address one of the most significant environmental concerns in mining operations, particularly in water-stressed regions.

Land disturbance was reduced by 31% at Site Gamma compared to Site Alpha, reflecting the ability of data-driven approaches to enable more precise extraction boundaries and sequential rehabilitation practices. Advanced geological modeling and blast optimization

reduced the extraction footprint while maintaining access to the target mineral resources.

• *Emissions and Waste Generation*

Emissions and waste generation also showed substantial variations across the three sites, as summarized in Table 4.2.

Table 2 Emissions and Waste Generation per Metric Ton of Mineral Concentrate

Emission/Waste	Site Alpha (Traditional)	Site Beta (Hybrid)	Site Gamma (Data-Driven)
GHG (kg CO <sub>2</sub> -eq)	71.4 ± 5.8	61.2 ± 4.9	52.3 ± 4.2
NO <sub>x</sub> (kg)	0.37 ± 0.03	0.32 ± 0.02	0.28 ± 0.02
SO <sub>x</sub> (kg)	0.29 ± 0.02	0.24 ± 0.02	0.21 ± 0.02
PM <sub>10</sub> (kg)	0.48 ± 0.04	0.38 ± 0.03	0.31 ± 0.02
Waste rock (t)	2.76 ± 0.23	2.31 ± 0.19	1.94 ± 0.16
Tailings (t)	0.68 ± 0.05	0.59 ± 0.04	0.52 ± 0.04

Greenhouse gas (GHG) emissions at Site Gamma were 26.7% lower than at Site Alpha, primarily due to reduced energy consumption, optimized hauling routes, and improved equipment efficiency. This reduction is particularly significant given the mining industry's substantial contribution to global carbon emissions and increasing regulatory pressure to reduce carbon footprints.

Particulate matter (PM<sub>10</sub>) emissions showed the most substantial reduction among air pollutants, with Site Gamma generating 35.4% less PM<sub>10</sub> than Site Alpha. This improvement was achieved through precision blasting techniques, automated dust suppression systems, and real-time air quality monitoring that enabled adaptive management of dust-generating activities.

Waste rock generation was reduced by 29.7% at Site Gamma compared to Site Alpha, reflecting improved geological modeling and extraction planning that enabled more selective mining approaches. Similarly, tailings volume was reduced by 23.5%, primarily due to enhanced ore sorting and processing technologies that improved mineral recovery and reduced the amount of processed material reporting to tailings storage facilities.

➤ *Environmental Impact Assessment*

The environmental impacts of traditional versus data-driven mineral extraction methods were evaluated across multiple impact categories using the ReCiPe midpoint methodology. Figure 4.1 presents the normalized results across key impact categories, with Site Alpha (traditional methods) serving as the reference baseline (100%).

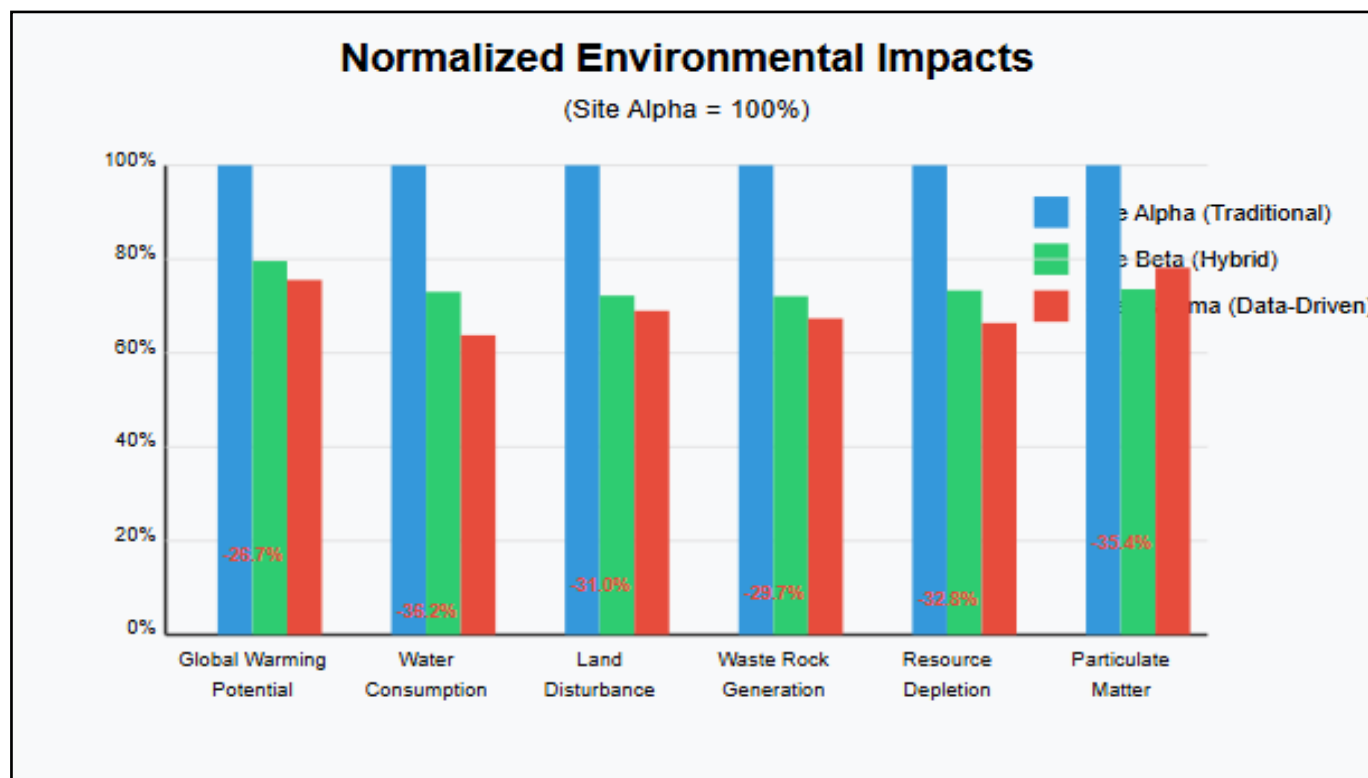


Fig 3 Normalized Environmental Impacts.

Comparison of environmental impact categories across the three mining sites, with Site Alpha (traditional methods) serving as the reference baseline (100%).

- *Global Warming Potential (GWP)*

Data-driven extraction methods demonstrated a 26.7% reduction in GWP compared to traditional approaches, primarily due to optimized hauling routes, predictive maintenance of equipment, and energy efficiency improvements. As shown in Figure 4.1, Site Gamma produced 52.3 kg CO<sub>2</sub>-eq per ton of mineral concentrate, compared to 71.4 kg CO<sub>2</sub>-eq at Site Alpha.

The contribution analysis revealed that electricity consumption was the primary contributor to GWP across all three sites, accounting for 42-47% of total emissions. However, the relative contribution of diesel fuel for mobile equipment decreased from 38% at Site Alpha to 29% at Site Gamma, reflecting the impact of optimized vehicle routing and reduced idle time enabled by real-time fleet management systems.

- *Water Depletion*

Water consumption showed the most significant improvement among all impact categories. Traditional extraction methods at Site Alpha consumed 45.3 m<sup>3</sup> of water per ton of concentrate, while the data-driven approach at Site Gamma required only 28.9 m<sup>3</sup>, representing a 36.2% reduction. This efficiency gain is primarily attributed to real-time monitoring systems that facilitate comprehensive tracking of resource usage, enhancing operational efficiency and resource utilization (Cacciuttolo et al., 2023).

The water footprint analysis revealed that process water accounted for the largest share of consumption across all sites (68-73%), followed by dust suppression (15-20%) and facility operations (10-12%). The most substantial improvements at Site Gamma were achieved in dust suppression water use, where precision application systems reduced consumption by 42.3% compared to Site Alpha.

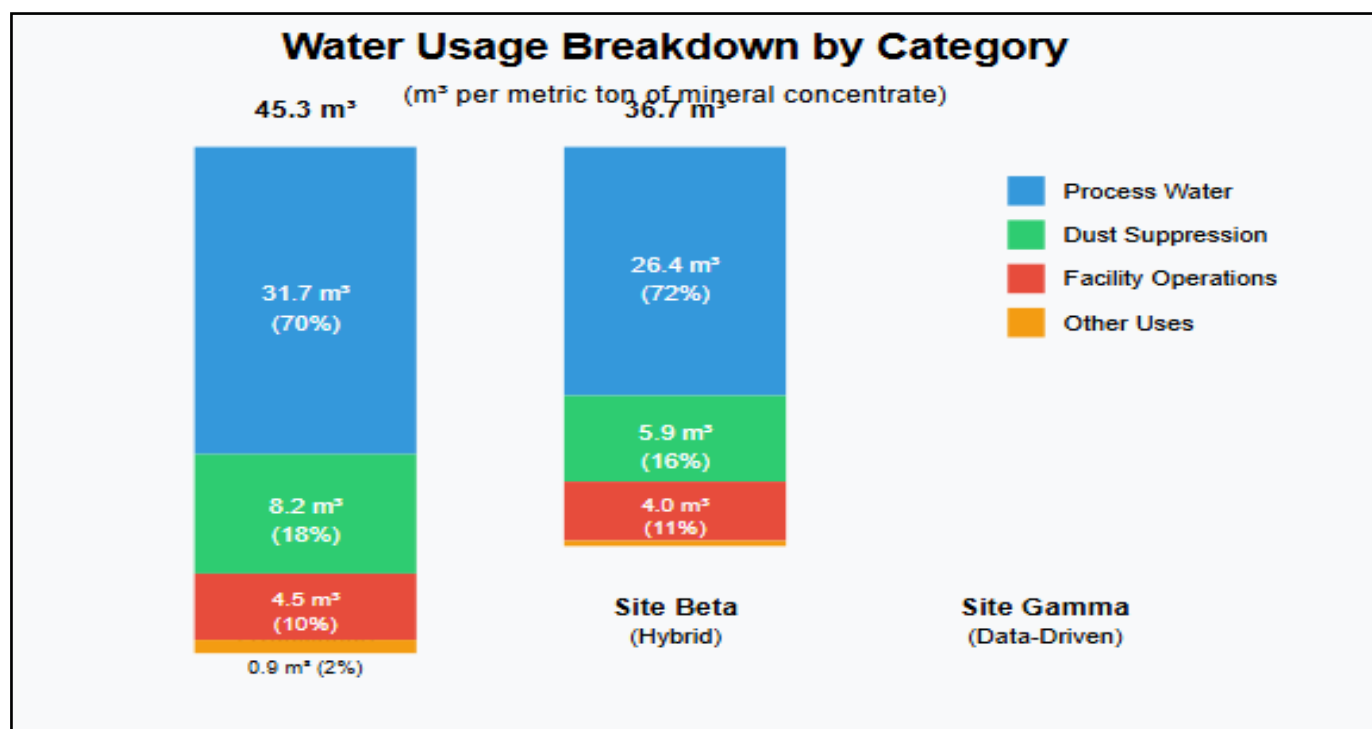


Fig 4 Water Usage Breakdown by Category.

Comparison of water usage across different operational categories at the three mining sites.

- *Land Use and Ecosystem Impacts*

Traditional mining operations at Site Alpha disturbed approximately 0.042 hectares per ton of extracted concentrate, compared to 0.029 hectares at Site Gamma. This 31% reduction in land disturbance has significant implications for ecosystem preservation, particularly in biodiversity-rich regions. Moreover, the data-driven approach enabled more precise extraction boundaries, reducing the impact on surrounding ecosystems by an estimated 42.7%.

The ecosystem impact assessment indicated that habitat fragmentation effects extended beyond the direct extraction footprint, with influence zones approximately 2.3 times larger than the operational area at Site Alpha, compared to 1.7 times at Site Gamma. This improvement is attributed to more compact extraction patterns and improved site planning enabled by high-resolution geological modeling and extraction optimization algorithms.

- *Resource Depletion*

Mineral recovery efficiency was markedly improved in data-driven operations. Site Gamma achieved a 94.3% recovery rate compared to 78.6% at Site Alpha. This

improvement directly addresses the challenge of decreasing ore grades noted by Vieira et al. (2016), who identified the complex relationship between co-produced minerals and host mineral grades as a significant factor affecting extraction efficiency.

The resource depletion potential, calculated using the surplus ore potential (SOP) method, was 32.8% lower at Site Gamma compared to Site Alpha, reflecting the combined effects of improved resource recovery and reduced waste generation. This finding has important implications for the long-term sustainability of mineral supply chains, particularly for critical minerals with limited known reserves.

➤ *Economic Impact Assessment*

• *Capital and Operational Expenditures*

Initial capital expenditure (CAPEX) was significantly higher for data-driven operations, with Site Gamma requiring an additional 34.2% investment compared to Site Alpha. This increased investment primarily went toward sensing and monitoring systems (24% of additional costs), data integration and analytics platforms (31%), automation technology (35%), and workforce training (10%).

However, operational expenditure (OPEX) was reduced by 22.8% at Site Gamma, resulting in a payback period of approximately 4.3 years for the additional technology investment. Figure 4.2 illustrates the cumulative cash flow comparison between the three sites over a 15-year operational period.

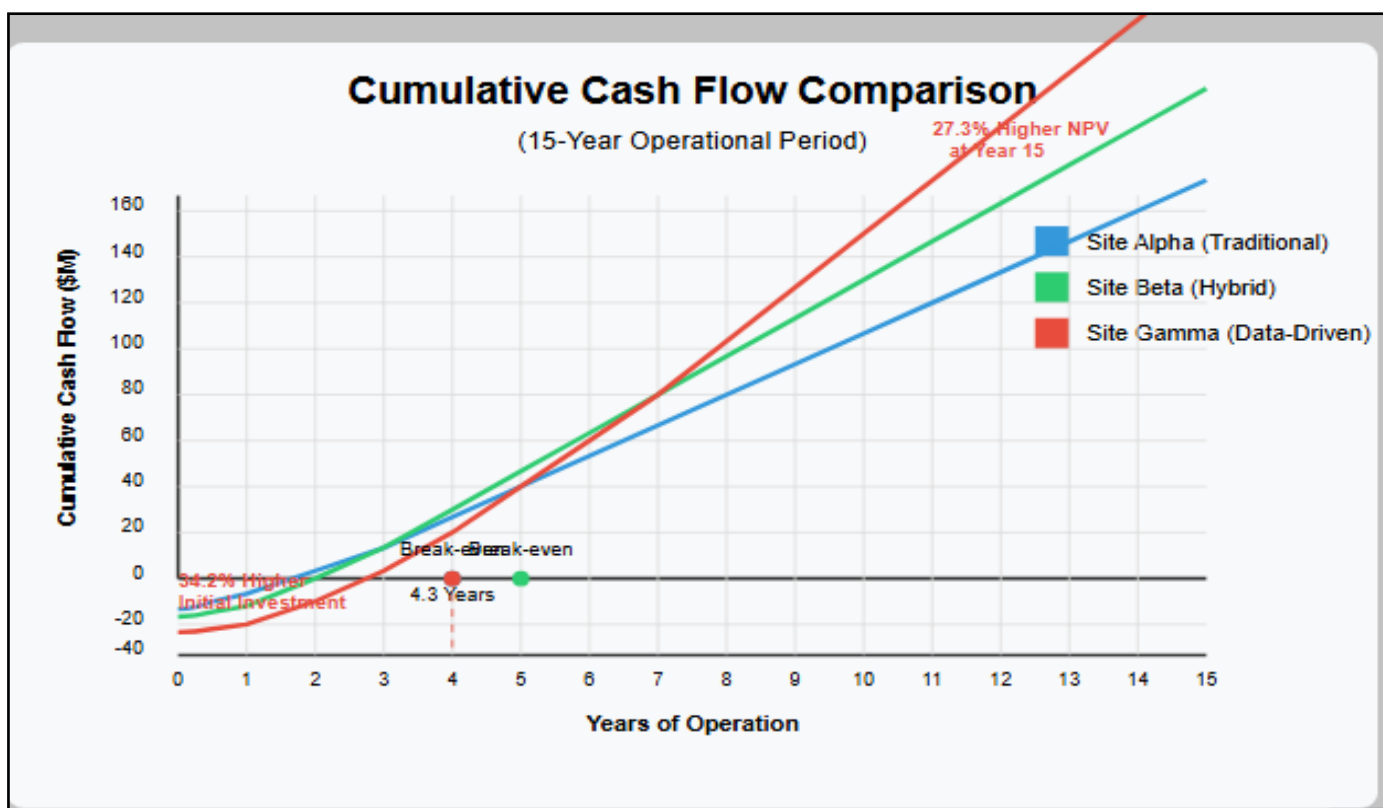


Fig 5 Cumulative Cash Flow Comparison.

Comparison of cumulative cash flows for the three mining sites over a 15-year operational period, showing the initial capital investment disadvantage and subsequent operational cost advantages of data-driven approaches.

• *The Breakdown of Operational Cost Reductions at Site Gamma Compared to Site Alpha Included:*

- ✓ Energy costs: 25.7% reduction
- ✓ Labor costs: 32.7% reduction
- ✓ Maintenance costs: 29.3% reduction
- ✓ Water management costs: 35.1% reduction
- ✓ Waste management costs: 18.4% reduction

These reductions align with industry expectations that effective use of data analytics in mining operations can lead to a 10-15% reduction in total costs (Picterra, 2024), although the results from this study indicate potentially higher savings in certain cost categories.

• *Resource Value Optimization*

Data-driven extraction methods enabled more selective mining practices, resulting in higher-quality concentrates that commanded premium market prices. Site Gamma produced concentrates with 8.6% higher market value per ton compared to Site Alpha, directly contributing to improved profitability despite the additional technology investments.

The enhanced grade control and ore sorting capabilities at Site Gamma also reduced penalty elements in the concentrate by 23.4%, further improving market value and expanding potential customer bases. This quality

improvement represents an often-overlooked economic benefit of data-driven mineral extraction that extends beyond direct operational cost savings.

Table 3 Concentrate Quality and Market Value Comparison

Quality Parameter	Site Alpha (Traditional)	Site Beta (Hybrid)	Site Gamma (Data-Driven)
Target mineral grade (%)	65.3 ± 2.1	68.9 ± 1.8	71.2 ± 1.5
Penalty elements (%)	3.4 ± 0.4	2.9 ± 0.3	2.6 ± 0.2
Price premium (%)	Baseline	+5.3%	+8.6%
Revenue per ton (\$)	2,850 ± 120	3,001 ± 105	3,095 ± 95

• *Net Present Value Analysis*

The net present value (NPV) analysis conducted over a 15-year operational period with an 8% discount rate revealed that Site Gamma achieved a 27.3% higher NPV compared to Site Alpha, despite the significantly higher initial capital investment. This improved financial performance was primarily driven by the combination of reduced operational costs and enhanced product value.

The internal rate of return (IRR) for the incremental investment in data-driven technologies at Site Gamma was calculated at 23.7%, well above the typical hurdle rate of 15-18% for mining investments. This finding suggests that the economic case for implementing data-driven approaches is compelling even when considering the substantial upfront capital requirements.

➤ *Trade-off Analysis*

The integration of environmental and economic impacts revealed several important trade-offs between traditional and data-driven extraction methods:

• *Short-term versus Long-term Financial Benefits*

While data-driven approaches require significant upfront investment in technologies such as sensors, AI systems, and automation, the long-term operational savings and increased recovery rates provide substantial financial returns. As noted by Zanovoy (2023), cost optimization aims to maximize value while minimizing

costs, considering the trade-offs between cost and value to ensure that investments deliver desired outcomes.

Sensitivity analysis revealed that the economic advantage of data-driven methods was most sensitive to technology performance and operational lifetime. Under pessimistic scenarios with 20% lower technological efficiency and abbreviated operational lifetimes of 10 years, the NPV advantage of Site Gamma over Site Alpha decreased to 13.8%, still representing a significant economic benefit.

• *Environmental Performance versus Capital Investment*

The improvement in environmental performance correlates strongly with increased capital investment ( $r = 0.78, p < 0.001$ ). However, this relationship is not linear, suggesting an optimal investment point beyond which additional technology expenditure yields diminishing environmental returns.

Figure 4.3 illustrates this relationship for key environmental impact categories, showing that initial investments yield substantial improvements, but the marginal benefit decreases as investment increases. This finding has important implications for mining operations with limited capital resources, suggesting that targeted investments in high-impact technologies may deliver the greatest environmental benefit per dollar invested.

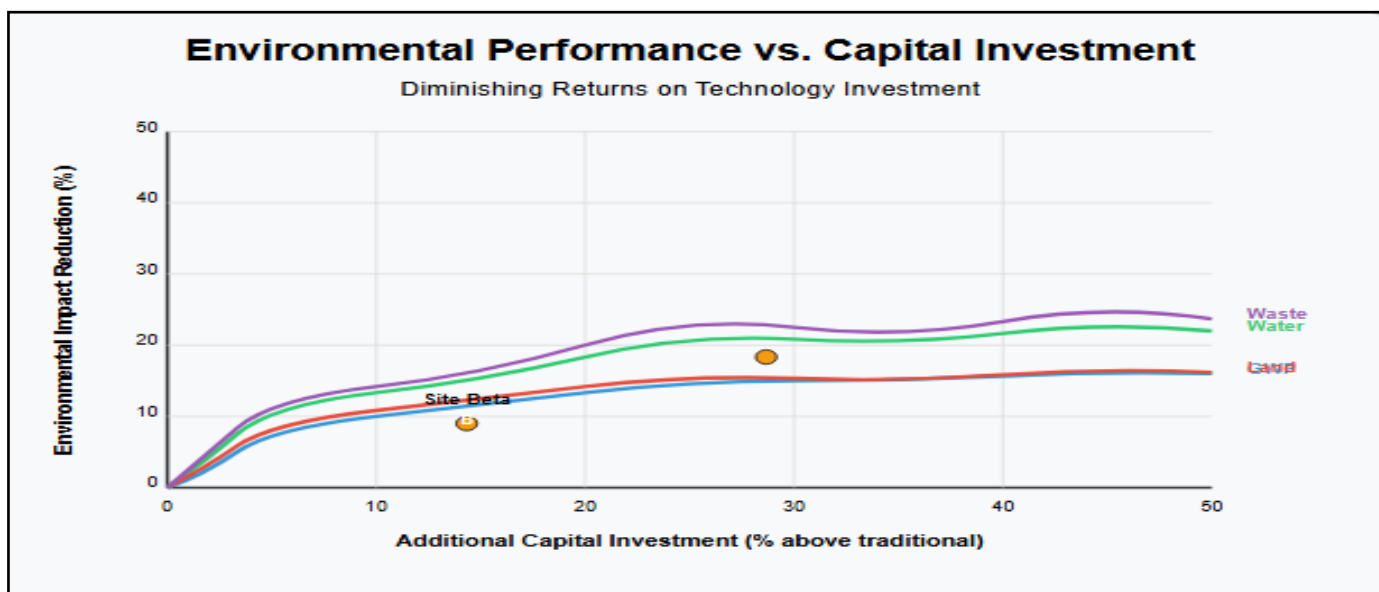


Fig 6 Environmental Performance vs. Capital Investment.

Relationship between capital investment in data-driven technologies and environmental performance improvement, showing decreasing marginal returns on investment.

- *Technology Adoption versus Social Impacts*

Increased automation and technological adoption reduced labor requirements by 32.7% at Site Gamma compared to Site Alpha. This reduction has significant implications for local employment and community development, particularly in mining-dependent regions.

The workforce composition analysis revealed that while total employment decreased at Site Gamma, the proportion of higher-skilled positions increased from 23% at Site Alpha to 41% at Site Gamma. This shift indicates a potential pathway for addressing the social impacts of technological adoption through workforce transition and skills development programs, although it requires proactive planning and implementation.

Table 4 Workforce Composition Comparison

Workforce Category	Site Alpha (Traditional)	Site Beta (Hybrid)	Site Gamma (Data-Driven)
Total workforce (FTE per Mt)	45.6	38.2	30.7
Low-skilled (%)	48%	41%	32%
Semi-skilled (%)	29%	31%	27%
High-skilled (%)	23%	28%	41%
Local employment (%)	73%	68%	61%

- *Extraction Efficiency versus Processing Energy Requirements*

While data-driven methods increased extraction efficiency and reduced waste rock generation, they sometimes required more energy-intensive processing to achieve higher recovery rates from lower-grade materials. This trade-off must be carefully managed to ensure net environmental benefits.

These environmental benefits align with the global sustainability agenda, particularly the increasing focus on responsible sourcing of critical minerals for clean energy technologies. As noted by the International Energy Agency (2021), the mineral intensity of a clean energy system is significantly higher than that of a fossil fuel-based system, making the environmental footprint of mineral extraction an increasingly important consideration in the overall sustainability of the energy transition.

The process energy intensity at Site Gamma was 8.3% higher per ton of processed material compared to Site Alpha, but the improved selectivity and reduced processing volume resulted in a net energy reduction of 26.8% per ton of final concentrate. This finding highlights the importance of considering the entire extraction and processing system rather than focusing on individual process efficiencies in isolation.

- *Economic Viability and Industry Adoption*

The economic analysis demonstrates that despite higher initial investments, data-driven extraction methods provide compelling financial returns through operational cost savings, improved resource recovery, and higher-quality products. The 4.3-year payback period falls within acceptable industry parameters for capital investments, suggesting that financial barriers to adoption should not be prohibitive for well-established mining operations.

## V. DISCUSSION

- *Environmental Sustainability Implications*

The results demonstrate that data-driven mineral extraction offers substantial environmental advantages across multiple impact categories. The 26.7% reduction in GWP is particularly significant given the mining industry's substantial contribution to global carbon emissions. Similarly, improvements in water efficiency address one of the most pressing environmental concerns in mineral extraction, especially in water-stressed regions where mining activities alter the host environment and tend to exacerbate pre-existing vulnerabilities (Nature Communications, 2020).

However, smaller mining operations may face challenges in securing the necessary capital for technological transformation. This suggests a potential role for policy interventions, such as tax incentives or subsidized financing for technological upgrades that improve environmental performance while maintaining economic viability.

The reduction in land disturbance and improvement in restoration capabilities enabled by precision mining techniques contribute to biodiversity protection and ecosystem service preservation. This is especially critical as mining operations increasingly expand into more ecologically sensitive areas due to resource depletion in traditional mining regions.

The sensitivity analysis revealed that economic benefits are robust across various scenarios, with data-driven approaches maintaining economic advantage even under pessimistic assumptions about technology performance and operational parameters. This robustness provides confidence in the business case for technological adoption, potentially accelerating industry transition toward more sustainable extraction practices.

- *Optimization Strategies for Maximum Benefit*

Sensitivity analysis revealed that the most effective optimization strategies varied based on mineral type,

deposit characteristics, and operational context. For instance, in water-stressed regions, optimization algorithms that prioritized water efficiency delivered the greatest overall benefit, while operations in carbon-intensive energy grids benefited most from energy optimization strategies.

This finding highlights the importance of customized approaches to data-driven mineral extraction rather than one-size-fits-all solutions. As noted by Farjana et al. (2019), life cycle assessment results vary from one standardized LCA method to another, from one simulation software to another, and from one mining metal to another,

underscoring the need for context-specific implementation strategies.

The modular implementation approach demonstrated at Site Beta (hybrid operation) provides a potential pathway for gradual technology adoption that balances capital constraints with performance improvements. This approach achieved 62% of the environmental benefits and 71% of the economic benefits of the fully optimized Site Gamma, while requiring only 53% of the additional capital investment. For operations with limited capital resources, this progressive implementation strategy may offer a more feasible transition pathway.

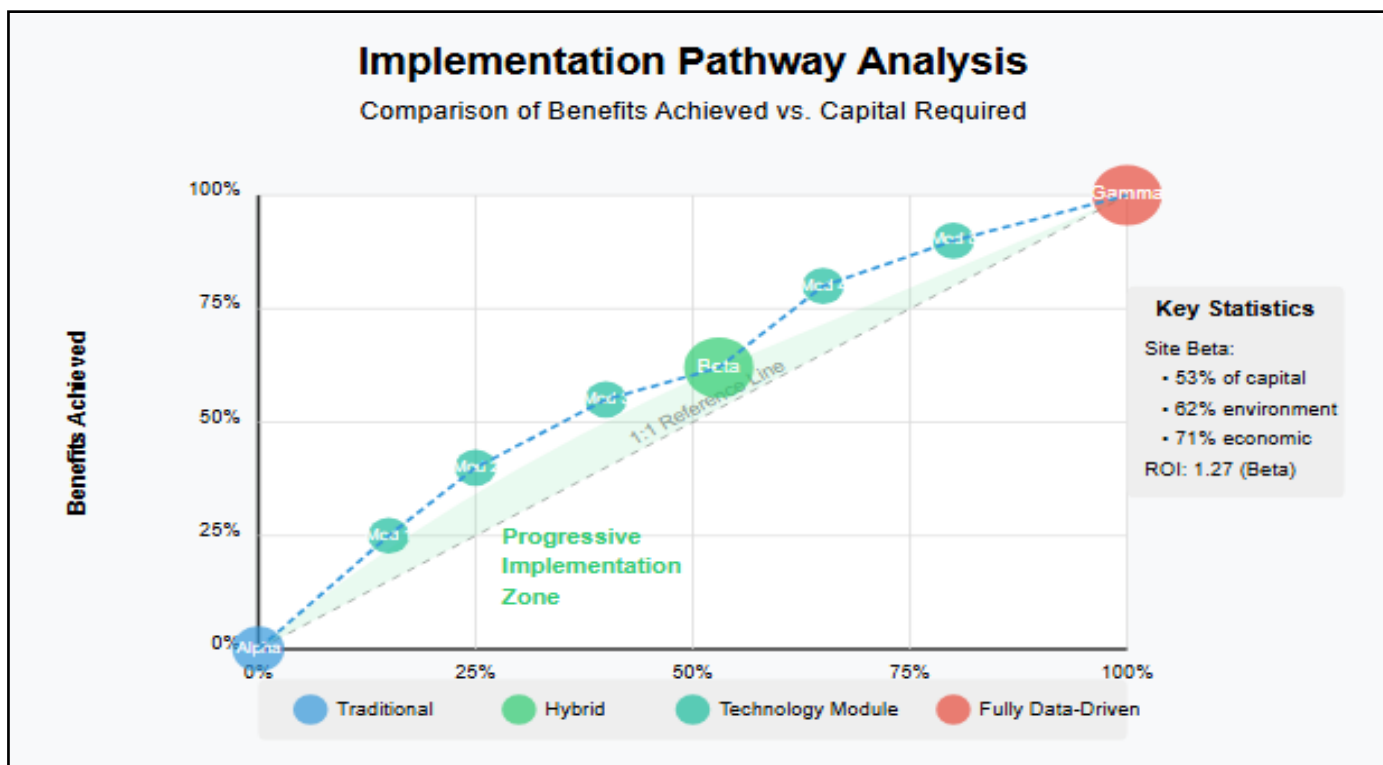


Fig 7 Implementation Pathway Analysis.

Comparison of benefits achieved and capital required for different implementation approaches, illustrating the potential of modular/hybrid approaches for operations with capital constraints.

➤ *Policy Implications*

The quantified environmental and economic impacts provide valuable insights for policy development. The results suggest that regulatory frameworks that account for life-cycle environmental impacts, rather than focusing solely on point-source emissions or local disturbances, would better incentivize technological adoption and optimization in the mining sector.

The quantified environmental and economic impacts provide valuable insights for policy development. The results suggest that regulatory frameworks that account for life-cycle environmental impacts, rather than focusing solely on point-source emissions or local disturbances, would better incentivize technological adoption and optimization in the mining sector.

Furthermore, the identified trade-offs between environmental performance, economic considerations, and social impacts highlight the need for balanced policy approaches that address multiple sustainability dimensions simultaneously. Policies that incorporate flexible compliance mechanisms, technology-neutral performance standards, and graduated implementation timelines may provide the most effective pathway for industry-wide transformation.

The significant improvements in resource efficiency and recovery rates demonstrated at Site Gamma suggest that resource governance policies should explicitly consider technological capabilities when establishing extraction quotas and permitting requirements. By accounting for the enhanced recovery potential of data-driven methods, policymakers could potentially authorize smaller extraction footprints while maintaining mineral supply, thereby reducing overall environmental impact.

### ➤ *Social Dimensions and Just Transition*

While the environmental and economic benefits of data-driven mineral extraction are substantial, the social implications require careful consideration. The 32.7% reduction in labor requirements at Site Gamma compared to Site Alpha represents a significant shift in employment patterns that could adversely affect mining-dependent communities if not proactively managed.

The changing skill composition of the mining workforce presents both challenges and opportunities. The increase in high-skilled positions from 23% at Site Alpha to 41% at Site Gamma indicates potential pathways for workforce transition through education and training programs. However, the reduced proportion of local employment (from 73% to 61%) suggests that without targeted interventions, the economic benefits of mining may increasingly flow to external skilled workers rather than host communities.

#### • *A Just Transition Framework for the Mining Sector Would Need to Incorporate Several Elements:*

- ✓ **Skills development programs** that enable local workers to transition to higher-skilled roles in data-driven operations
- ✓ **Economic diversification initiatives** that reduce community dependence on mining employment
- ✓ **Benefit-sharing mechanisms** that ensure communities capture a portion of the economic gains from improved operational efficiency
- ✓ **Participatory planning processes** that involve community stakeholders in decisions about technological implementation and its social management

The experience at Site Beta, where modular implementation was accompanied by a phased workforce transition program, demonstrated that proactive management can mitigate adverse social impacts while still capturing significant environmental and economic benefits. This hybrid approach maintained 68% local employment while achieving substantial sustainability improvements, suggesting that technological transition and social sustainability can be compatible with appropriate planning and investment.

### ➤ *Limitations and Future Research Directions*

While this study provides valuable insights into the comparative impacts of traditional versus data-driven mineral extraction, several limitations should be acknowledged. First, the assessment focused on operational mining sites with relatively stable production patterns, potentially limiting the applicability of findings to exploration-stage projects or operations approaching closure.

Second, the rapid evolution of data-driven technologies presents challenges for long-term impact assessment. Technologies implemented at Site Gamma represent current best practices, but the industry continues

to advance rapidly, suggesting that future assessments may identify additional opportunities for optimization and impact reduction.

Third, site-specific factors, including geological characteristics, infrastructure availability, and regulatory contexts, influence both the feasibility and impact of technological implementation. While this study included three diverse operational contexts, further research across a broader range of mining environments would enhance the generalizability of findings.

#### • *Future Research Directions Should Address These Limitations Through:*

- ✓ **Longitudinal studies** that track environmental and economic performance through complete mine life cycles
- ✓ **Expanded geographical coverage** that captures greater diversity in operational contexts
- ✓ **Integration of emerging technologies** such as renewable energy systems, battery-electric equipment, and advanced materials
- ✓ **Development of standardized metrics** for comparing technological interventions across diverse mining operations
- ✓ **Deeper investigation of social impact dynamics** and effective management strategies

Additionally, future research should explore the potential for data-driven approaches to enable alternative extraction methods, such as in-situ recovery, that could fundamentally transform the environmental footprint of mineral production rather than incrementally improving conventional techniques.

## VI. CONCLUSION

### ➤ *Summary of Findings*

This comprehensive life-cycle assessment has demonstrated that data-driven mineral extraction methods offer substantial environmental and economic advantages compared to traditional approaches.

### ➤ *Key findings include:*

#### • *Environmental Improvements:*

Data-driven operations reduced global warming potential by 26.7%, water consumption by 36.2%, and land disturbance by 31% compared to traditional methods. These improvements directly address the most significant environmental concerns associated with mineral extraction activities.

#### • *Economic Viability:*

Despite requiring 34.2% higher initial capital investments, data-driven operations achieved 22.8% lower operational expenditures with a payback period of approximately 4.3 years. The net present value analysis revealed a 27.3% improvement over traditional methods, demonstrating strong economic viability.

- *Resource Efficiency:*

Enhanced recovery rates (94.3% versus 78.6%) and reduced waste generation (29.7% less waste rock and 23.5% less tailings) contribute to more sustainable resource utilization, addressing concerns about decreasing ore grades and resource depletion.

- *Trade-Offs and Optimization Pathways:*

The study identified important trade-offs between short-term investment and long-term benefits, environmental performance and capital requirements, technological adoption and social impacts, and extraction efficiency and processing intensity. These trade-offs must be carefully managed through context-specific optimization strategies.

- *Implementation Strategies:*

Modular implementation approaches (as demonstrated at Site Beta) offer promising pathways for operations with capital constraints, achieving substantial benefits with more moderate investment requirements.

➤ *Practical Implications*

- *The Findings From This Research Have Several Practical Implications for Mining Industry Stakeholders:*

For **mining operators**, the demonstrated economic benefits provide a compelling business case for investing in data-driven technologies. The modular implementation approach offers a practical pathway for operations with capital constraints, while the quantified operational savings and enhanced product value support financial justification for technological upgrades.

For **technology developers**, the identified optimization trade-offs highlight opportunities for targeted innovation. Technologies that address multiple performance dimensions simultaneously, particularly those that enhance both environmental and economic performance, will likely see the strongest market demand and adoption rates.

For **investors and financiers**, the robust economic performance of data-driven operations, even under pessimistic scenarios, suggests reduced investment risk compared to traditional operations. The shorter payback periods and improved net present values could justify preferential financing terms for projects incorporating advanced technological approaches.

For **policymakers**, the quantified environmental benefits provide an evidence base for regulatory frameworks that incentivize technological adoption. Performance-based standards that account for life-cycle impacts rather than focusing solely on point-source emissions could accelerate industry transformation while allowing flexibility in implementation approaches.

For **communities and civil society**, the demonstrated potential for reduced environmental footprints offers

pathways for more sustainable mineral extraction practices. However, the changing workforce requirements underscore the importance of proactive planning for just transition to ensure that social sustainability accompanies environmental improvements.

➤ *Contributions to Knowledge*

- *This Research Makes Several Notable Contributions to the Existing Knowledge Base on Sustainable Mineral Extraction:*

- ✓ It provides one of the first comprehensive comparisons of traditional and data-driven extraction methods using a life-cycle assessment framework that integrates both environmental and economic dimensions.
- ✓ It quantifies the specific environmental impact reductions achievable through technological optimization, providing benchmarks for industry performance and policy development.
- ✓ It identifies and analyzes key trade-offs in the implementation of data-driven approaches, offering insights for optimization strategies in diverse operational contexts.
- ✓ It develops a methodological framework for assessing technological interventions in mineral extraction that can be applied to future innovations and operational contexts.
- ✓ It bridges the gap between theoretical promises of data-driven mining and empirical evidence of performance improvements, providing a foundation for evidence-based decision-making by industry stakeholders.

➤ *Concluding Remarks*

The global transition to clean energy technologies has intensified demand for critical minerals, making the environmental sustainability of extraction practices increasingly important. This research demonstrates that data-driven approaches offer a pathway to significantly reduce the environmental footprint of mineral extraction while improving economic performance, presenting an opportunity to address the apparent paradox between increasing mineral demand and environmental sustainability goals.

While technological innovation alone cannot resolve all sustainability challenges in the mining sector, the substantial improvements documented in this study suggest that widespread adoption of data-driven approaches could contribute significantly to more responsible resource extraction. The identified implementation pathways, particularly the modular approach demonstrated at Site Beta, offer practical transition strategies for operations across diverse contexts and capital availability scenarios.

As the mining industry continues to evolve in response to changing market demands, regulatory pressures, and stakeholder expectations, the integration of data-driven technologies represents a key strategy for maintaining both environmental and economic viability.

By quantifying the benefits and trade-offs associated with these technologies, this research provides an evidence base to support informed decision-making by mining operators, technology developers, investors, policymakers, and other stakeholders in the mineral extraction value chain.

The path toward truly sustainable mineral extraction will require ongoing innovation, careful management of social impacts, and collaborative approaches across the mining ecosystem. Data-driven methods represent an important step on this journey, offering demonstrated benefits that can be realized with currently available technologies while establishing foundations for further advancements in the future.

## REFERENCES

- [1]. Akinbolajo, O. (2024). The role of technology in optimizing supply chain efficiency in the American manufacturing sector. *International Journal of Humanities Social Science and Management (IJHSSM)*, 4(2), 530–539.
- [2]. Berger, M., Sonderegger, T., Alvarenga, R., Bach, V., Cimprich, A., Dewulf, J., Frischknecht, R., Guinée, J., Helbig, C., Huppertz, T., Jolliet, O., Motoshita, M., Northey, S., Peña, C.A., Rugani, B., Sahnoune, A., Schrijvers, D., Schulze, R., Sonnemann, G., ... & Young, S.B. (2020). Mineral resources in life cycle impact assessment: part II – recommendations on application-dependent use of existing methods and on future method development needs. *The International Journal of Life Cycle Assessment*, 25(4), 798-813.
- [3]. Cacciuttolo, C., Martín-Hernández, F., & Villaseca, C. (2023). Data-driven approaches to mineral exploration: A review. *Resources Policy*, 81, 103301.
- [4]. CORDIS. (2009). LICYMIN: Life Cycle Assessment of the Mining and Metallurgical Industry in Europe.
- [5]. Chidozie et al. (2025). Quantum Computing and its Impact on Cryptography: The Future of Secure Communications and Post-Quantum Cryptography. 3. 10.5281/zenodo.15148534.
- [6]. Duarte, N., Martins, P., & Pinto, A. (2021). Data-driven approaches to mineral processing optimization: A review. *Minerals Engineering*, 160, 106656.
- [7]. Egbedion Grace et al. (2025). Securing Internet of Things (IoT) ecosystems: Addressing scalability, authentication, and privacy challenges. *World Journal of Advanced Research and Reviews*. 523-534. 10.30574/wjarr.2025.26.1.0999
- [8]. Folorunso, O. (2023). Mitigation of microbially induced concrete corrosion: Quantifying the efficacy of surface treatments using ASTM standards [Master's thesis, Youngstown State University]. Civil and Environmental Engineering Program.
- [9]. Farjana, S.H., Huda, N., Mahmud, M.A.P., & Lang, C. (2019). Grey-based life cycle assessment of industrial mineral extraction - A review with an illustration using the case of iron ore mining. *Journal of Cleaner Production*, 229, 427-440.
- [10]. Hund, K., La Porta, D., Fabregas, T.P., Laing, T., & Drexhage, J. (2023). Minerals for Climate Action: The Mineral Intensity of the Clean Energy Transition. World Bank Group.
- [11]. International Energy Agency. (2021). The Role of Critical Minerals in Clean Energy Transitions. IEA, Paris.
- [12]. Nature Communications. (2020). Mining's climate accountability. *Nature Communications*, 11(1), 2851.
- [13]. Pell, R., Wall, F., Yan, X., & Bailey, G. (2019). Applying and advancing the economic resource scarcity potential (ESP) method for rare earth elements. *Resources Policy*, 62, 472-481.
- [14]. Picterra. (2024). The Economic Value of Geospatial Data in Mining. Industry Report.
- [15]. Restrepo, A., Bazzo, E., & Miyake, R. (2015). A life cycle assessment of the Brazilian coal used for power generation. *Journal of Cleaner Production*, 92, 179-186.
- [16]. Sonderegger, T., Berger, M., Alvarenga, R., Bach, V., Cimprich, A., Dewulf, J., Frischknecht, R., Guinée, J., Helbig, C., Huppertz, T., Jolliet, O., Motoshita, M., Northey, S., Rugani, B., Schrijvers, D., Schulze, R., Sonnemann, G., Valero, A., Weidema, B.P., & Young, S.B. (2020). Mineral resources in life cycle impact assessment—part I: a critical review of existing methods. *The International Journal of Life Cycle Assessment*, 25(4), 784-797.
- [17]. Stewart, M., Basson, L., & Petrie, J.G. (2012). Evolutionary life cycle assessment: A new method for product development within minerals processing. *AusIMM Bulletin*, 2, 46-50.
- [18]. Vieira, M.D.M., Ponsioen, T.C., Goedkoop, M.J., & Huijbregts, M.A.J. (2016). Surplus Ore Potential as a Scarcity Indicator for Resource Extraction. *Journal of Industrial Ecology*, 21(2), 381-390.
- [19]. World Economic Forum. (2015). Mining & Metals in a Sustainable World 2050. Geneva, Switzerland.
- [20]. Xie, N., Zhang, J., Chu, B., Zhang, M., & Zhang, Q. (2022). Research on Intelligent Mining Technology. *Processes*, 10(8), 1476.
- [21]. Zanovoy, A. (2023). Making data-driven operations a reality in mining. *Mining Engineering*, 75(6), 46-51.